

Midway's

GAME NO. 577
JANUARY, 1974

Playtime

PARTS CATALOG



MIDWAY MFG. CO.
3750 RIVER ROAD
SCHILLER PARK, ILLINOIS, 60176, U.S.A.

PHONE : (312) 678-1350

CABLE ADDRESS : MIDCO

TABLE OF CONTENTS

	Page No.
GENERAL INSTRUCTIONS	1
"PLAYTIME" ALIGNMENT INSTRUCTIONS	2—3—4
PLAYTIME	5—6
CONTROL HANDLE ASSEMBLY (PLASTIC)	7—8
CONTROL HANDLE ASSEMBLY (METAL)	9—10
ADDITIONAL PARTS	11
NOTES	12

GENERAL INSTRUCTIONS FOR "PLAYTIME"

INSTALLATION:

The power is controlled by a switch located on top of the cabinet. Plug into A. C. only, 115 volts, 60 cycles.

EQUIPMENT PANEL AND LOGIC UNIT:

Located in back box area and are easily serviced by removing back door.

GAME OVER SCORE SWITCH:

Located on logic board at section "J8" to end game at 11 or 15 points. (See separate enclosed instructions).

PLAYER SERVE SELECTION:

Located on logic board at section "K3".

- "A" jumped to "D". "B" jumped to "C". Player who has been scored upon serves next.
- "A" jumped to "C". "B" jumped to "D". Player who has scored serves next. (See diagram on page 2 of separate enclosed instructions for location of points "A", "B", "C", and "D").

COIN CONTROL SELECTION:

Located on logic board at section "L3".

- "E" jumped to "1" allows 1 play per coin.
- "1" jumped to "2" allows 1 play for 2 coins.

(When converting a game to 2 coins per play, it is necessary to add a SCR at section "L9" on logic board. Call factory for further information).

PADDLE CONTROLS AND ADJUSTMENTS:

Located on logic board. (See separate enclosed diagram and adjustment information for control locations).

VOLUME CONTROL:

Located on top of cabinet. To increase volume, rotate in a clock-wise direction.

3750 N. RIVER ROAD

MIDWAY MFG. CO.

SCHILLER PARK, ILLINOIS 60176

“PLAYTIME” ALIGNMENT INSTRUCTIONS

HLP: Horizontal Left Position –

Setting this pot will determine proximity of left paddle to net – approximately $\frac{3}{4}$ ”.

HRP: Horizontal Right Position –

Same as above, but for right paddle.

HLS: Horizontal Left Swing –

This setting will determine how far left paddle will travel from net to edge of T. V. screen for full horizontal movement of left control stick.

HRS: Horizontal Right Swing –

Same as above, but for right paddle.

VLP: Vertical Left Position –

This setting will determine proximity of left paddle to top or bottom border – set for spacing of approximately 1 raster-line from each border.

VRP: Vertical Right Position –

Same as above, but for right paddle.

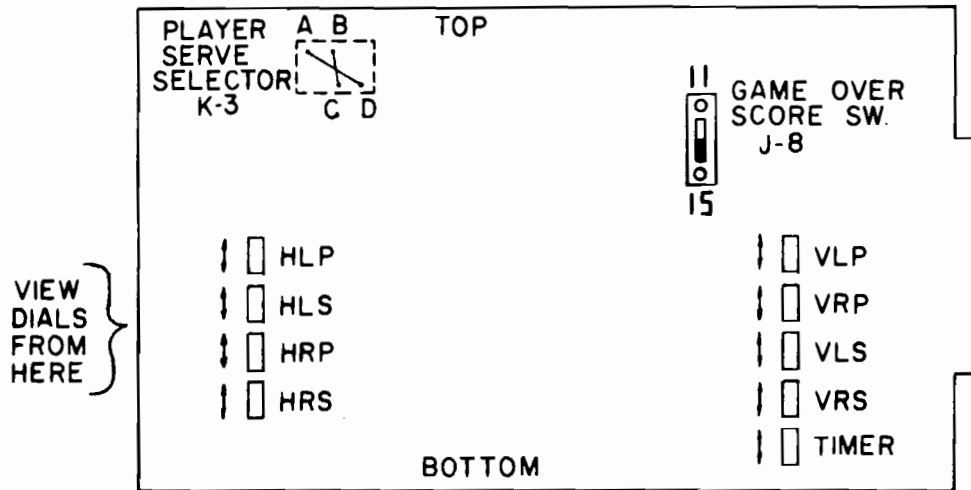
VLS: Vertical Left Swing –

Setting will determine total travel of left paddle between top and bottom borders for full vertical movement of left control stick.

VRS: Vertical Right Swing –

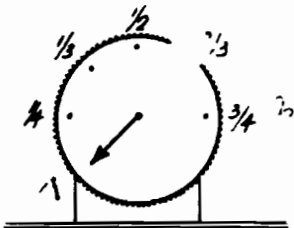
Same as above, but for right paddle.

"PLAYTIME" ALIGNMENT PROCEDURE



These preliminary steps are to be done before logic board is inserted in game. Observe orientation of logic board (top & bottom).

Observe dial faces of pots from left side of board.



Now set the dial arrow for each pot to the preliminary settings below.

Top ← → Bottom
(as seen from left side)

HLP: 1/2	VLP: 2/3
HLS: 1/4 – 1/3	VRP: 2/3
HRP: 1/2	VLS: 1/3
HRS: 1/2 – 2/3	VRS: 1/4 – 1/3

Now plug logic board into game.

Now slowly move each control stick to locate their corresponding paddles – with the preliminary settings, you should be able to locate each paddle in its respective half of the playfield.

``PLAYTIME`` ALIGNMENT PROCEDURE – Continued

Now manipulate the pots so that each paddle moves:

Horizontal Max Swing & Position – 3/4'' from net and 3/4'' from edge of screen.

Vertical Max Swing & Position – Approximately one (1) raster line below top border and one (1) raster line above bottom border.

Use list below for final fine adjustments:

ROTATING POT TO:	MOVES PADDLE TO:
HLP: Top	Right
Bottom	Left
HLS: Top	Shorter swing
Bottom	Longer swing
HRP: Top	Right
Bottom	Left
HRS: Top	Shorter swing
Bottom	Longer swing
VLP: Top	Down
Bottom	Up
VRP: Top	Down
Bottom	Up
VLS: Top	Shorter swing
Bottom	Longer swing
VRS: Top	Shorter swing
Bottom	Longer swing

TIME ADJUSTMENT

Timer Pot –

Top	–	4:30 approximately
Bottom	–	2:15

NO. 577 PLAYTIME

**T.V. SET 19"
(MONITOR W/SPEAKER)
17-3-118**

**FRONT GLASS (DOMESTIC)
577-900
(FOREIGN)
577-901**

**FACE TRIM
567-105**

**CONTROL ASS'Y.
577-001
OR 577-007**

**MIDWAYS FRONT
COIN DOOR ASS'Y
90-020-2**

**BALL SPEED SW.
17-32-25**

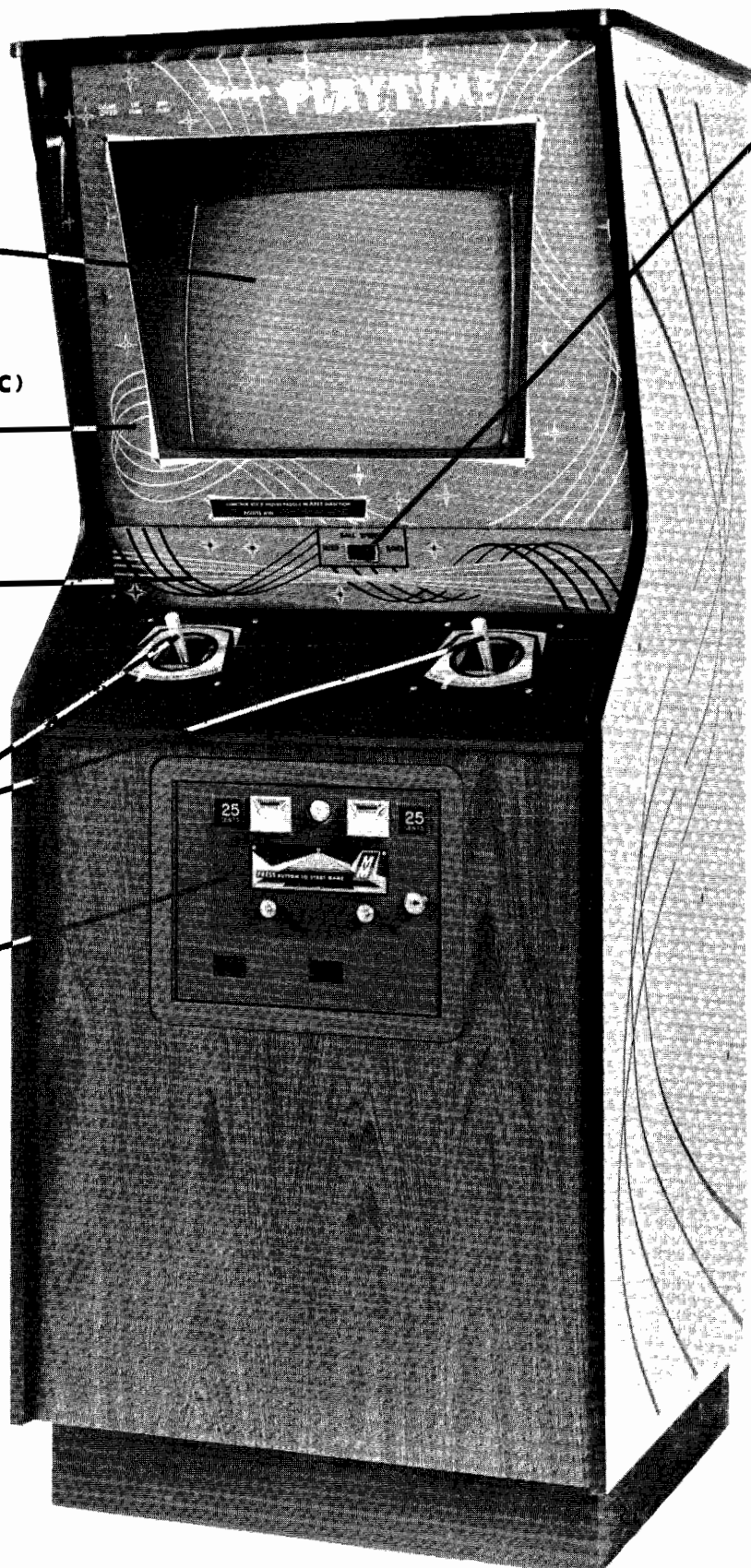
**NOT SHOWN
T.V. SUPPORT BRK'T.
ASS'Y. 571-005**

**CASH BOX
566-120
COVER
566-121**

**GLASS RETAINER
PLATE 567-112**

**SWITCH MTG. BRK'T.
(VOLUME) 567-106
(ON/OFF) 567-106-1**

**SPEAKER BEZEL
547-035
GRILL
549-128
VENT GRILL
572-103**



MIDWAY MFG. CO.

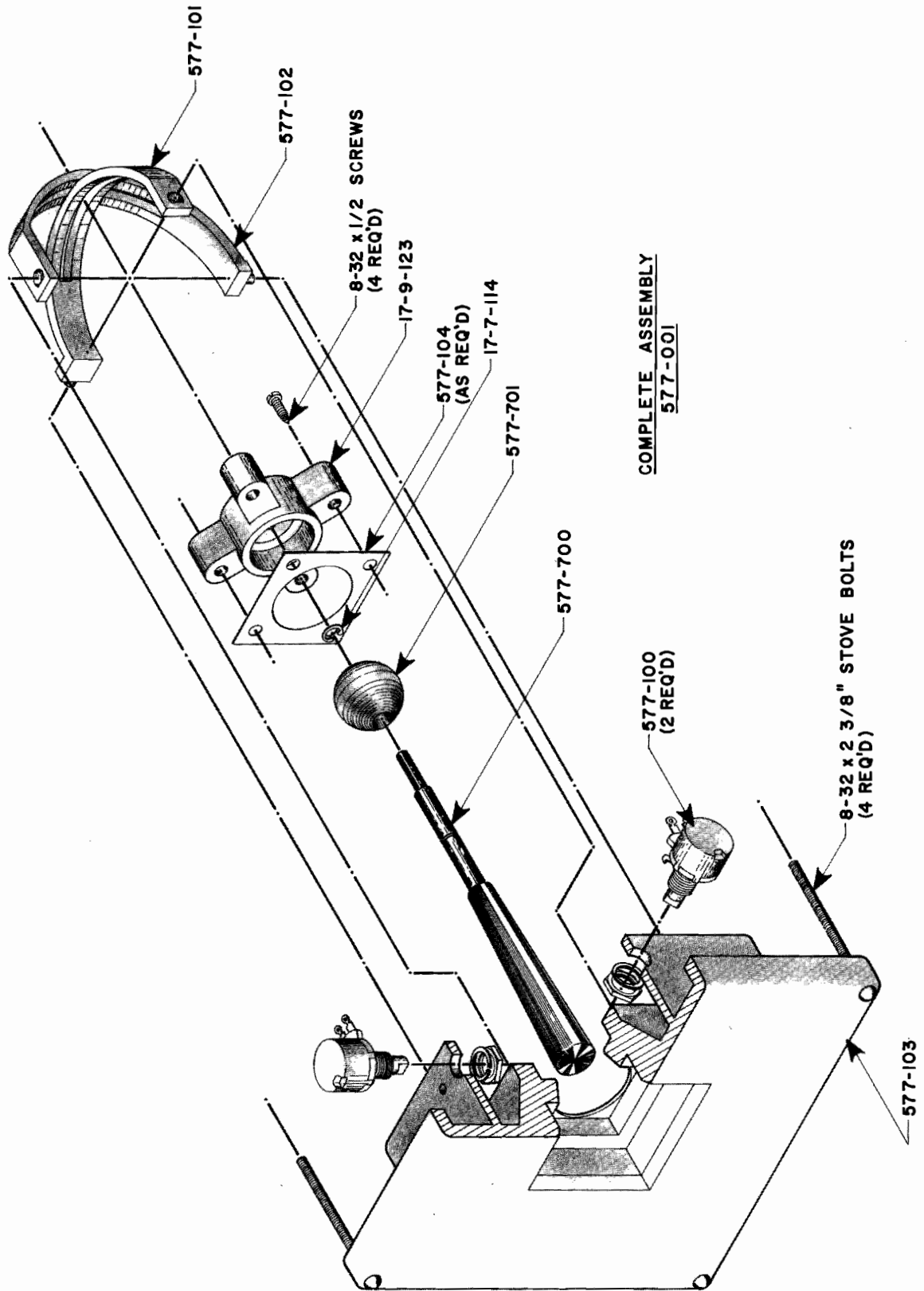
NO. 577 PLAYTIME
PRICE LIST

ARRANGED IN NUMERICAL ORDER

PART NO.	DESCRIPTION	PRICE
17-3-118	T. V. SET (19" MONITOR W/SPEAKER)	330.00 EA.
547-035	SPEAKER BEZEL	1.80 EA.
549-128	GRILL	1.00 EA.
566-120	CASH BOX	5.00 EA.
566-121	COVER – CASH BOX	1.60 EA.
567-105	FACE TRIM	4.40 EA.
567-106	SWITCH MOUNTING BRACKET (VOLUME)	.20 EA.
567-106-1	SWITCH MOUNTING BRACKET (ON/OFF)	.40 EA.
567-112	GLASS RETAINER PLATE	3.80 EA.
571-005	T. V. SUPPORT BRACKET ASSEMBLY	3.20 EA.
572-103	VENT GRILL (3 REQUIRED)	1.00 EA.
577-900	FRONT GLASS (DOMESTIC)	27.20 EA.
577-901	FRONT GLASS (FOREIGN)	28.00 EA.

MIDWAY MFG. CO.

NO. 577 PLAYTIME - CONTROL HANDLE ASSEMBLY



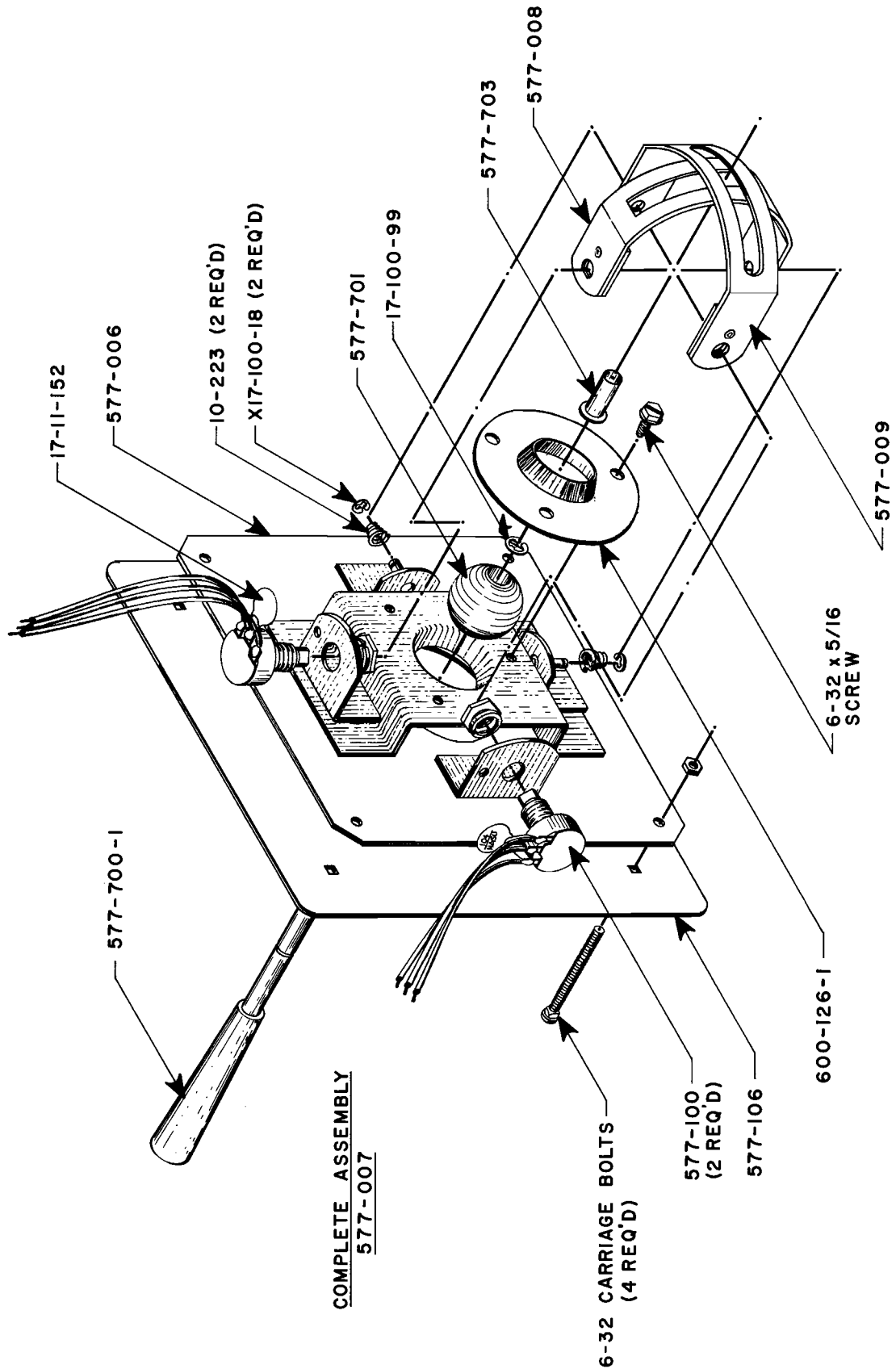
MIDWAY MFG. CO.

PRICE LIST**ARRANGED IN NUMERICAL ORDER**

PART NO.	DESCRIPTION	PRICE
17-7-114	CRESCENT RING	.20 EA.
17-9-123	COVER	7.00 EA.
577-001	PLASTIC CONTROL HANDLE ASS'Y (2 REQ'D)	70.00 EA.
577-100	POTENTIOMETER (2 REQUIRED)	5.50 EA.
577-101	ARCH	6.50 EA.
577-102	BIG ARCH	6.50 EA.
577-103	HOUSING	30.00 EA.
577-104	SPACING SHIM (AS REQUIRED)	.20 EA.
577-700	HANDLE	3.20 EA.
577-701	PIVOT BALL	3.10 EA.

MIDWAY MFG. CO.

NO. 577 PLAYTIME - CONTROL HANDLE ASSEMBLY



NO. 577 PLAYTIME – CONTROL HANDLE ASSEMBLY (METAL)

PRICE LIST

ARRANGED IN NUMERICAL ORDER

PART NO.	DESCRIPTION	PRICE
10-223	CONICAL SPRING (2 REQUIRED)	.10 EA.
17-11-152	0.1 MF 25V CERAMIC CAPACITOR (2 REQ'D)	.50 EA.
X17-100-18	"E" RING (2 REQUIRED)	.10 EA.
17-100-99	CRESCENT RING	.20 EA.
577-006	SUB-PLATE SUB ASSEMBLY	6.40 EA.
577-007	METAL CONTROL HANDLE ASSEMBLY	40.00 EA.
577-008	ARCH, SMALL SUB ASSEMBLY	1.85 EA.
577-009	ARCH, LARGE SUB ASSEMBLY	2.05 EA.
577-100	POTENTIOMETER (2 REQUIRED)	5.50 EA.
577-106	TOP PLATE W/ARTWORK	5.50 EA.
577-700-1	HANDLE	3.20 EA.
577-701	PIVOT BALL	3.10 EA.
577-703	SLEEVE	.25 EA.
600-126-1	RETAINER	.50 EA.

MIDWAY MFG. CO.

NO. 577 PLAYTIME – ADDITIONAL PARTS

PRICE LIST**ARRANGED IN NUMERICAL ORDER**

PART NO.	DESCRIPTION	PRICE
MT-40	TRANSFORMER (50 & 60 C)	20.00 EA.
17-3-55	LAMPS 12V. (7 REQUIRED)	.20 EA.
17-3-102	ENM D.C. METER COUNTER (6V., 4.08W)	11.00 EA.
17-3-114	FILTER EMI 5B2	12.00 EA.
17-3-119	SPEAKER 4" SQ. 16. OHM	4.80 EA.
17-32-25	ROCKER SWITCH	2.80 EA.
17-034-32-05	ON/OFF PUSH BUTTON SWITCH	1.60 EA.
17-073-13-88	VOLUME CONTROL POTENTIOMETER	2.80 EA.
17-086-31-02	SOCKETS – LAMP (7 REQUIRED)	.20 EA.
17-257-3-65	A. C. LINE CORD – GROUNDED (16 FT.)	3.50 EA.
577-903	P. C. LOGIC BOARD (3 BALL SPEEDS)	500.00 EA.
577-905	OPTIONAL – AUXILIARY BALL SPEED P. C. (5 BALL SPEEDS)	33.35 EA.

MIDWAY MFG. CO.

NOTES

This space is provided for personal notes